



# THE GREATER DES MOINES Jewish Press

Published as a Community Service by the Jewish Federation of Greater Des Moines

volume 19 number 6



**SHAVUOT BEGINS THE EVENING OF JUNE 5.** Shavuot (The Feast of Weeks) is so called because it completes the seven weeks from the second day of Passover on which the omer (a measure) of the new barley was brought to the Temple. This holiday celebrates the early wheat harvest in Israel. It commemorates the covenant at Sinai between God and the Jewish people, and the giving of the Ten Commandments.

## President Appoints Harlan Hockenberg To U. S. Holocaust Memorial Council



WASHINGTON, D.C., May 7, 2003. President George W. Bush has named three new members to the United States Holocaust Memorial Council, the governing body of the United States Holocaust Memorial Museum, including past president of the Jewish Federation, Harlan "Bud" Hockenberg. The Federation and JCRC join in congratulating Bud on this high honor.

"We are fortunate to have such an experienced and dedicated group of leaders joining us at this critical time in the institution's history," said Fred S.

Zeidman, Chairman, United States Holocaust Memorial Council. "I look forward to working with them as we celebrate our first decade of accomplishments and embark on ambitious new initiatives that will shape the next 10 years."

Harlan D. Hockenberg is a Partner at Sullivan & Ward, PC. He is Chairman of the Greater Des Moines Metro Forum and Grassley Committee, Inc. He also serves on the Board of Directors of the Smoother Sailing Foundation and the Board of Governors of the Republican Jewish Coalition, and is a member of the Jewish Community Relations Commission of the Jewish Federation of Greater Des Moines and the Executive Committee of AIPAC. *continued on page 16*

## PILOT PRESCHOOL PROGRAM OFFERED BY JEWISH ACADEMY

The Des Moines Jewish Academy is proud to announce the establishment of an exciting new preschool program. The new preschool, the DMJA's Early Learning Center, is on schedule to open this fall. The Early Learning Center will be a five-day a week pre-kindergarten program strictly for children who will be at least four years old by September 15, 2003.

The lessons the children will experience in the preschool classroom will help prepare the children for Kindergarten with the added richness of exposure to Jewish customs and traditions. The DMJA's Early Learning Center program is designed to enrich a child's comprehension and appreciation of the world in a fun and wholesome way. *continued on page 16*

## Senator Grassley to Speak at Federation Annual Meeting, June 29



Please take part in the 89th Annual Meeting of the Jewish Federation of Greater Des Moines on Sunday June 29th, 2003, at 7:00 pm at The Caspe Terrace.

Our Guest Speaker this year will be Senator Charles E. Grassley.

Senator Grassley is one of the first and most vocal advocates on behalf of Russian Jewry, a strong supporter of Israel, and a Member of the Holocaust Council of the U.S. Memorial Holocaust Museum in Washington, D.C. Senator Charles Grassley is Senior Senator for the State of Iowa. He was first elected to the Iowa State Legislature in 1958, the U.S. House of Representatives in 1974, and the U.S. Senate in 1980.

The senator is Chairman of the Finance Committee, which deals, in part, with proposed legislation relating to the Social Security Act. The only working family farmer in the U.S. Senate, he is on the Agriculture Committee. He is a member of the Committee on Judiciary, concerned with immigration and naturalization, and a member of the Senate's Budget Committee and Committee on Taxation. In addition to bearing responsibilities in our nation's capitol, Senator Grassley maintains close contact with his constituents in Iowa. Among other means, he manages to hold open meetings in each of Iowa's 99 counties, every year.

It is our honor to welcome Senator Grassley to The Caspe Terrace as guest speaker at the 89th Annual Meeting of the Jewish Federation of Greater Des Moines.

## [inside]

- 3 **CAMP SHALOM JUNE 16 - AUG. 8**
- 9 **COMMUNITY MISSION TO ISRAEL NOV. 9-20**
- 14 **ISRAELI SCOUTS PERFORM JULY 21**
- 16 **TEMPLE INSTALLING RABBI KAUFMAN JUNE 13**
- 19 **IJHS GENEALOGY SOCIETY FORMS JUNE 22**

The Greater Des Moines Jewish Press  
910 Polk Boulevard  
Des Moines, IA 50312-2297

Address Service Requested

Presort Standard  
U.S. Postage  
**PAID**  
Des Moines, IA  
Permit No. 2506



# real people, true stories



**Dr. Harvey and Barbara Hirsch-Giller**

One of the most successful programs sponsored by the Jewish Federation has been the Melton Adult Mini-School. Bringing together a diverse group of people within our community to share the joy of interpreting the meaning, the texts, and the customs of Judaism – as an adult – the Melton Program has touched many lives here in Des Moines.

If you've not experienced Melton, it is perhaps hard to describe its vitality. But here, one family, gives it a try. Here's what Dr. Harvey and Barbara Hirsch-Giller have to say!

"In the midst of our hectic family and professional lives, we made a conscious decision to reserve our Thursday evenings for the next two years to share an experience of our faith and our traditions. Although religion and spirituality have always been very important within our family, we felt a need to reconnect to Judaism and the people of Israel.

Melton offers a venue for seeking God on a very personal level and at the same time connects us through practice and theology to all who have gone before us. Whether or not one has experienced Jewish education as a child, Melton presents the opportunity to learn in an atmosphere that is open, honest, and without judgment. We believe that our group is our very special and sacred community.

We have come to look forward to Thursday evenings; we come voluntarily and share our thoughts and feelings as adults. The importance of Melton has been immeasurable for us as we find ourselves more firmly committed to the teachings of Judaism in our family's practices and in our lives within a very diverse human community."

Well said. Thank you, Harvey and Barb.

**Support the All-In-One Campaign.**



## SENIOR ADULT NEWS Senior Day Trip

**Trip to Ames featured stops at Reiman Gardens, Brunnier Art Museum and Farm House Museum.**

**Photo: Herbert & Jeanette Rosen, Edward & Frances Rosen, Freda Jacobson, Sam Jacobs, Charlotte Raush, Frieda Levin (not pictured Adeline Jacobs)**

**Big Band Cruise - June 24**

**Next Senior Lunch - June 26**

**at Tifereth Israel, RSVP to Emily at 515-277-6231.**

**Come Join Us!**

**ENGMAN CAMP SHALOM RUNS JUNE 16 – AUGUST 8, AT THE CASPE TERRACE**

The Camp Committee is excited to present to you our 46th summer of Camp Shalom, where camp is more than fun and games. Camp is about building skills and building confidence, making friends and making memories, feeling safe, secure, and happy, while...**GROWING TOGETHER!**

We are excited about our new program opportunities, such as our weeks of Woodworking, Ice Skating, Tennis and more! We are glad to bring back our Cooking, Magic and Baseball weeks, and our old favorites of Soccer and Horseback Riding. We are also very excited about our new camp called Camp Sabra. This camp is for those children going into 7th and 8th grade and who are wanting to learn more about the Israeli culture.

**Here's a little about the camping experiences we offer...**

### CAMP KIBBUTZ

Entering Kindergarten – 2nd Grade

Camp Hours: 9:00 a.m. – 12:00 noon or 9:00 a.m. – 3:30 p.m.

Camp Kibbutz offers those campers entering Kindergarten in the fall, and the newer campers a good introduction to day camp. Campers have the option of a half day or full day camp program. The program provides campers the opportunity for fun in a safe and pleasant environment.

Held at The Caspe Terrace, this program provides a day full of challenging activities from sports and games to creative drama, as well as a general camping program with swimming, arts & crafts and a variety of field trips. Our Israeli Shlichim, (Israel Cultural Specialists), will offer campers exciting programs to reinforce a connection to Jewish life through Israeli dancing, music, nature activities and Shabbat programs.

### CAMP MACCABIM

Entering 3rd – 6th Grades

Camp Hours: 9:00 a.m. – 3:30 p.m.

Camp Maccabim is a specialized camp and leadership program designed to build confidence and skills within a specific activity. Professional focus on a different activity allows campers to learn a new skill, master old ones, enhance individual creativity and accomplishments.

In addition, our Israeli Counselors will offer campers exciting programs to reinforce a connection to Jewish life through Israeli dancing, music, nature activities and Shabbat programs.

### CAMP SABRA

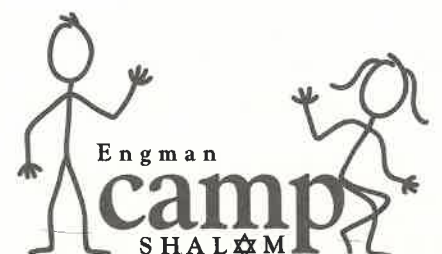
Entering 7th and 8th Grades

Camp Hours: 9:00 am – 3:30 pm

Camp Sabra (Sabra stands for Israeli natives) is for those campers entering 7th and 8th grade in the Fall. This camp is for campers who want to have tons of fun while learning more about the Israeli culture. Sabra campers can participate in the same activities as regular Maccabim campers, but instead of swimming in the afternoons, these campers shadow our Shlichim. Sabra campers will be helping the two shlichim with Israeli culture while exploring Israeli food, fashion, popular music, cool Hebrew slang, and listening to the Shlichim's stories as soldiers.

For information or to register for Camp Shalom, contact the Jewish Federation at 277-6321.

Christy Bender, Camp Director;  
Dana Wylie, Committee Chair;  
Camp Shalom Committee: Dana Wylie,  
Julie Howald, and Becky Swartz.



## YOU HELP US CHANGE LIVES...

We are your **JEWISH COMMUNITY SERVICES** and you are our partner in preserving and strengthening the Jewish family.

### What services do we offer?

- Jewish Family Services Counseling - Individuals, families, seniors and children
- Senior Adult Programs - Senior Adult luncheons and case management
- Resettlement Program - Case management and health services to new émigrés
- Jewish Family Life Education - Operation Good Mensch
- Outreach - Baby baskets, welcoming newcomers
- Volunteer Opportunities - Numerous volunteer projects

### How you can help!

- Donate today! Your gift will directly help individuals in need.
- Volunteer today! You are an essential part of our program.
- Use our services! We are here to provide services to strengthen the Jewish family, which will strengthen our Jewish Community.



**Jewish Community Services is a Pillar within the Jewish Federation.**

JCS programs include those offered by Jewish Family Services, Senior Adult Services, Resettlement and other various committees.

For more information please call Rabbi Berel Simpser, Director of JCS at 515-277-6321



# Options For The Health Of Your Estate Plan

Americans are well known for volunteering their time and other resources for the benefit of causes in which they believe. As a result, all our lives are enriched. But like most of us, you may be concerned with the future well being of your favorite charity, such as the Jewish Federation of Greater Des Moines.

For this reason, many people also choose to include their charitable interest in their long-range financial planning. Making an ultimate charitable gift can go hand-in-hand with preserving economic security for one's self and loved ones, thanks to many available methods of planning.

The will is one of the most popular vehicles for making long-range gifts. For each multimillion-dollar charitable bequest you've read about, countless smaller ones are arranged by people of all means, in all walks of life. Indeed, the economic stability of nonprofit causes of all types has been built largely upon charitable bequests.

## Ways to Make Bequests

The best way for you to make a charitable bequest through your will depends on a number of factors, including your assets, family considerations, and number of charitable interests. A few of the most commonly used methods are introduced here.

### Giving a Specific Amount

Stating a dollar amount to be given in your will offers certainty as to the amount that will ultimately be put to charitable use. If you plan to update your will regularly and you are certain that funds will be adequate to satisfy charitable gifts along with other legacies, then *giving a specific amount* may be a good option to consider.

### Giving a Specific Property

When you know that a charitable recipient needs a particular item or asset to further its long-range goals, you may want to bequeath a specific piece of property.

Be sure to check with the intended recipient to make certain the asset you want to leave can be put to its best use.

Keep in mind that if you sell or otherwise dispose of the asset during your lifetime, you may unintentionally "disinherit" your charitable interests. Therefore, it is important to make contingent provisions in the event the property you have bequeathed is no longer among your assets.

### Giving a Percentage

If you would like to establish a definite relationship between your charitable and non-charitable legacies, consider the idea of giving a percentage of the assets passing under your will to charity. This way, your charitable dispositions will automatically adjust with fluctuations in the total amount passing under your will.

### Taking Care of Survivors First

In addition to the charitable giving bequest options briefly described, you may arrange for the assets left through your will to be used to provide support for a surviving spouse or others before any distribution to charity takes place.

### All or Part of "What's Left"

Safeguarding the interests of your family and other loved ones should always come first in your estate plans. If you are not comfortable bequeathing a specific amount or percentage of your assets to charity, you might wish to provide for a gift from the "residue" or

"what's left" after specifically providing for your loved ones.

In this manner you can assure that others receive what you would like them to have before any assets are distributed for charitable use. You may provide that all, a specific amount, or a percentage of the remainder of your estate shall pass to charitable interests.

## A Variable Income

Through a number of planning tools, you can arrange to retain an income from your assets for you, a surviving spouse or other person. Two of these variable income options are charitable remainder trusts and charitable gift annuities. Did you know that you can set up a charitable gift annuity for as little as \$10,000? If you are 70 you can receive a guaranteed fixed income for your life of 7.4 percent. If you are 80 you will receive 9.2 percent for the rest of your life. Depending on how your charitable remainder trust or charitable gift annuity is structured, at your passing, at the death of those others receiving income or at the end of some other period of time you determine, all or a portion of the assets pass to charity. Contact your financial advisor for more information.

## A Fixed Income

If you are concerned about the future earning capabilities of your assets, you can retain a fixed income for loved ones through a well-planned will, while providing for an eventual charitable gift.

Whether you select a fixed or variable income plan, it may also be possible to provide that the corpus of the plan be available to you in the event of emergencies, if necessary.

## Tax Benefits

If your estate will be subject to federal taxes, remember that there is no limit to the amount that can be left to charity and deducted from your estate. Some of the plans that include income to a survivor with an eventual charitable gift also feature tax benefits.

## Gifts from Other Plans

If you plan to rely on revocable living trusts, retirement plans, life insurance policies or other methods in addition to your will to transfer your estate, remember that charitable gift opportunities exist through those vehicles as well. The tax advantages can be comparable to those available from a gift through your will.

## Reviewing Your Plans

If having a will and estate plans is key to accomplishing some of life's most cherished goals, keeping your arrangements up to date is equally important. After all, your plans can only reflect your desires at one point in life. As relationships and circumstances change, so should your plans.

Estate planning experts suggest regular reviews about every three years or whenever a major event occurs in your life (births, deaths, drastic changes in wealth, etc.).

To review your will, see your attorney. He or she can tell you if laws have changed that might suggest a change in your plan.

**For more information about Estate Planning call Stan Richards, Marvin Winick or Elaine Steinger at the Des Moines Jewish Foundation 515-277-6321**



## Message from the Federation President Don Schoen



My term as President will be over in July and I would like to reflect not only on my tenure as President of the Des Moines Jewish Federation but on some of the changes which occurred during the past 10 years I have served on the board.

Over the past decade, our community has seen the loss of many marvelous and generous patrons, and we have grieved their passing. We are thankful, however, that they or their families have thoughtfully provided a gift of lasting significance to the Federation, to the Foundation and/or contributed to the Caspe Terrace. As well, during this time many wonderful donations have been received from generous community members, for which we are grateful.

A second trend pertains to how we build our relationship with Israel. The Federation has moved from sending substantial monetary contributions to Israel to channeling our resources to encourage more personal interaction with Israel. We participate in the successful Partnership 2000 program, we bring in our Israeli counselors each summer, and we have welcomed our Areiva (Ayelet) who teaches for our community school. And for the past four years, we have set aside funds to help defray costs for those individuals wanting to visit Israel on Missions. Most recently, we traveled to Omaha as a community group to help bolster sales at an Israeli vendor fair, the proceeds of which go directly into Israel's economy. It is through all of these innovative ways that Israel is becoming more of a living reality in the lives of our community members.

Another change has taken place within how we enable more community participation. To accommodate your time constraints, we have moved from a Federation consisting of static Boards to one of Pillars and more flexible project teams. The difference is that volunteers now spend less time sitting around a board room table and more time on the activity itself, helping people directly. Also, pertaining to administration, our Federation heard that the community felt we were top-heavy in personnel and through reorganization we have been able to reduce staff without decreasing the quality of services.

Although our intention has always been to meet the needs of our donors, we have made a conscious effort over the last 6 years to be more responsive. I believe we have become a more open and inclusive organization in the process of reorganization. We now have many new opportunities for you to get involved in activities that are important to you, and the process of improvement is by no means complete. We are currently very focused, as an organization, on improving education and senior programming, and strengthening the social connections within our Des Moines Jewish community. We must recognize that The Caspe Terrace and the Bookey Lodge, Staroselsky Wing within the Bucksbaum Center are tremendous assets, wonderful gems. With these facilities at our disposal, our community has unprecedented tools with which to inspire Jewish unity and creativity.

We have made great strides, but our community must continue to evolve. We have to realize that for Des Moines to remain a strong Jewish community, people young and old need to be involved. The message is that all of our local Jewish organizations need your time. For us to revitalize and build our community we must each make the effort to contribute our dollars and time. Through this volunteerism we can each make an impact. We are counting on you to pitch in.

I have been very fortunate to have served with some great people during these past 10 years, people with a genuine desire to help others. I have learned from them all and I am a better person as a result. From many of these individuals I have learned that we, collectively, have to make some hard decisions to ensure the continued vitality of our community. It is now almost self-evident that we must harness our resources to promote growth, lest we decline. There are only two options for our community. Either we grow stronger out of necessity or we eventually fade away, to the point of our becoming simply an asterisk in a textbook noting that we are a former Jewish community. We are truly at a turning point.

Thank you for listening. Hope to see you at the annual Federation meeting on June 29.

Shalom,  
Don

## slice of life



THE GREATER DES MOINES

## Jewish Press

Published 6 times annually by the Jewish Federation of Greater Des Moines under the auspices of the Jewish Community Communications Pillar

Don Schoen,  
President

Elaine Steinger,  
Executive Director

Audrey Rosenberg,  
Communications Pillar Chair

### Advisory Committee

Heidi Moskowitz, Chair\*

Michael Blank

Gil Cranberg\*

Debbie Gitchell\*

Harlan Hockenberg\*

Dr. Yelena Malina

Robert E. Mannheimer

Audrey Rosenberg\*

Mark S. Finkelstein\*, Editor

Thomas Wolff, Art/Marketing Director

### \*Editorial Board

The Greater Des Moines Jewish Press  
910 Polk Boulevard  
Des Moines, IA 50312

Phone: 515-277-6321

Fax: 515-277-4069

E-mail: jcrdM@aol.com

Opinions expressed in *The Greater Des Moines Jewish Press* are not necessarily those of the Jewish Federation of Greater Des Moines, its committees or its staff. Unsigned editorials express the opinion of the paper's Editorial Board.

We are always happy to accept articles and contributions. We reserve the right to edit for space and clarity.

Vol. 19 No. 6, June 2003



### Zeldene Lipsman Retires from Federation

Always helpful, always cheerful, Zeldene Lipsman has been part of our Federation family for over 26 years. As an important member of our clerical staff, Zeldene assisted the community immensely. Now, upon her retirement, we wish to thank her for her years of dedicated service and friendship. We express our sincere appreciation and wish health and happiness to our beloved friend, colleague, and family member.

In a year  
of crisis,



Federation  
can help keep  
the children  
safe.

The bombings in the Afula and French Hill tragically illustrate Israel's 21st century reality: The children aren't safe on the street anymore. They have no privileges. They can't go to the mall or to the playground or get a slice of pizza with their friends. They're afraid and resentful. The challenge for us is to keep them safe while still letting them be children and letting them do the things children need to do.

Your gift to the Israel Emergency Campaign will provide additional security guards at thousands of Israeli pre-schools; counseling and stress management programs, crisis hotlines, workshops at drop-in counseling centers, and extended after-school and summer programming. Give generously. And give NOW.





### Jewish Federation Community School

It seems just a short time ago that the 2002-2003 JFCS religious school year was starting and now we finished our last day on Sunday, May 18. JFCS is about making friends and making memories, learning about our culture and heritage and learning about what makes each of our students special. This year our students, pre-Kindergarten through 12th grades, spent time making new friends, learning with old friends and making memories from their experiences this year. Each grade learned a little more about their Jewish heritage and culture in different ways whether it was eating special foods, participating in a seder or program, reading and learning about our history, listening to speakers or taking special field trips.

Parents and students, in case you run into any of our teaching staff during the summer, please take a moment to thank them for their dedication. As you know, even though our staff is paid, their dedication and time is worth so much more than what we could offer. Our staff for the 2002-2003 school year included: Cynthia Shulman (Pre-K), Jamie Schnobelen (Pre-K helper), Morah Yedidah (K), Julie Margolin (1st), Krys Phillips (2nd, 8th), Pat Johnson (3rd), Jane Abrams (4th, 7th, 10th), Rachel Hjelmaas (5th), Ayelet Kleinman (5th, Conversational Hebrew, 9th), Wendy Beckerman and Ben Kaufmann (Hebrew for 3rd - 5th grades), Robin Karney (6th, Ethics & Values Jr/Sr HS), Jody Hramits (Ethics & Values Jr/Sr HS), Rabbi Wolf (7th), Jake Jacobs (11th & 12th), Cantor Laura Berkson (youth group), Rabbi HaLevi (Ethics & Values, Confirmation), and Rabbi Kaufman (Confirmation).

The help from our volunteers makes it a little easier to get through the year. Volunteers in our classrooms were: Danielle Kitsis (Pre-K), Leah Cole and Arlene Wolf (2nd), Aaron Aldridge (Hebrew), Brandon Mazer (Hebrew) and Suse Lerner (snacks). I would like you to know that Stacie Franklin and Cathy Mansfield volunteer almost every Sunday to offer our Kindergarten through 2nd grades a musical Sunday morning service. On many occasions they will continue with the 3rd through 5th grades to offer them the opportunity to learn new songs, sing old ones, and join our students in their Sunday morning service. They have also both helped to enhance many of our special programs throughout the year.

I would also like to thank all of the parents who have helped in the classrooms, during our programs, and cooking in the kitchen.

Teachers and volunteers, from the bottom of my heart THANK YOU. Our school is very fortunate to have the type of staff and volunteers that we do. Without you, our school would not be the success it has been from year to year. Keep up the good work and I look forward to another rewarding year.

—Lyanna Grund – JFCS Coordinator

### Florence Melton Adult Mini School

## What is the Florence Melton Adult Mini School?

The Florence Melton Adult Mini School, a project of the Hebrew University of Jerusalem, is an innovative concept for Jewish learners from all backgrounds, aimed at enabling Jewish adults to learn seriously about our heritage and culture in a challenging and inspiring course of study.

The unique curriculum is pluralistic, introducing every Jew to the shared heritage of our people. The 2-year program consists of 30 sessions per year, held weekly for 2 hours, plus a short break. Completion of first year is a prerequisite for the second year.

The Jewish Federation of Greater Des Moines is proud to sponsor the Florence Melton Adult Mini School in Central Iowa. We invite you to join 15,000 adults in more than 50 communities throughout the Jewish world, whose lives have been changed by this internationally acclaimed school of study.

There are no grades or required examinations. Upon completion of the program, graduates receive a certificate of Jewish Learning from Hebrew University. All graduates of the Melton Mini School are eligible to attend the Melton Mini School trip to Israel.

The First-Year Class is held on Thursday Evenings 7:00-9:15 pm (including break) at Tifereth Israel Synagogue. Classes begin at the end of August. Several openings are still available for the first year class of the 2003-2004 session.

### What are the First Year Courses?

#### • The Purposes of Jewish Living

This course explores the meaning and purpose of life from a Jewish perspective. We present essential Jewish theological concepts as they unfold in the Bible, the Talmud and other sacred texts. Instructor: Dr. David Friedgood

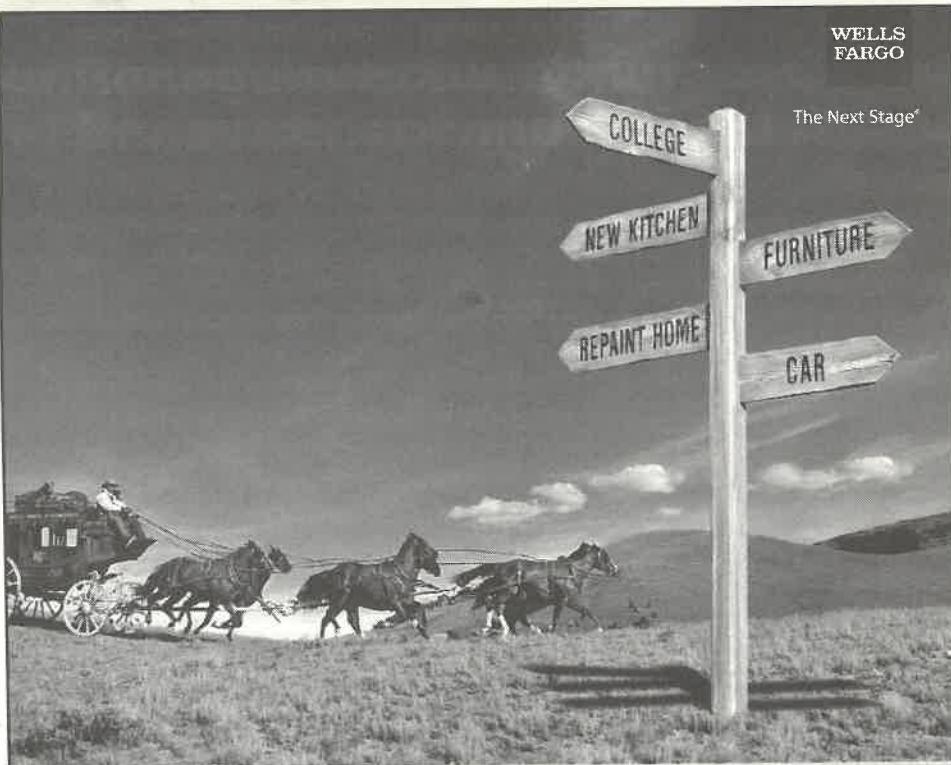
#### • The Rhythms of Jewish Living

This course deals with the daily and cyclical Jewish experience. Students study the central ideas, beliefs and practices that define Jewish life. Instructor: Rabbi Berel Simper

For More Information or to register: Contact Alice Friedgood, Coordinator  
The Florence Melton Adult Mini-School of the Jewish Federation of Greater Des Moines Phone 277-6321, Fax 277-4069 alidav@aol.com  
Sponsored by: The Jewish Federation of Greater Des Moines  
See related article, page 2

WELLS  
FARGO

The Next Stage®

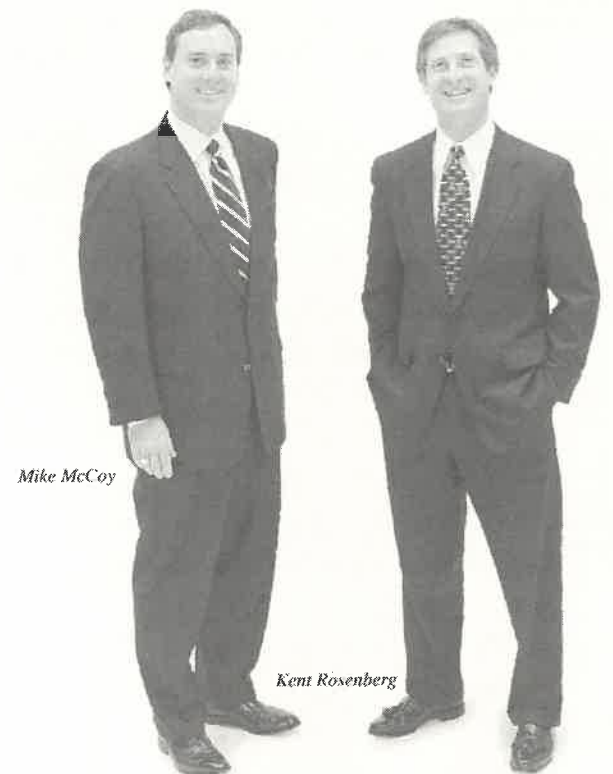


### The right loan for wherever you're headed next.

Nothing makes you feel more confident than knowing you're on the right path. That's why our Wells Fargo personal bankers work directly with you to find the home equity, personal loan or line of credit that fits your needs. Plus, all our loans and lines have flexible terms, competitive rates and affordable payment options to help you get where you want to go. After all, we have been helping people get to their Next Stage of financial success for over 150 years. Stop by and talk to a Wells Fargo banker, visit us online at [wellsfargo.com](http://wellsfargo.com), or call 1-800-WFB-OPEN and find the right loan or line of credit today.

© 2003 Wells Fargo Bank. All rights reserved.

## Who is Arthur J. Gallagher?



Mike McCoy

Kent Rosenberg

We both are.

Grandy, Pratt, McCoy, Rosenberg & Associates is now Arthur J. Gallagher & Co. of Iowa. We're part of the world's leading risk management, insurance and employee benefit company, providing global resources with local expertise. Call (515) 457-8849, or visit [www.ajg.com](http://www.ajg.com).



Arthur J. Gallagher & Co. of Iowa



## A Yiddish "Field Trip"

Oyf Zuntik, der tsveyter tog in Mertz, di lerer fun Temple B'nai Jeshurun Yiddish klas, Shirley Friedman, mit ir talmidim zaynen gegangen tsum Nosh far mitog. Alan Pearlman hot gemakht a rezervatsye far halb nokh elf.

Di balebuste fun Nosh, Diane Pratt, hot gekokht undz kishke, knishes, un kashe varenishkes far forshpayz. Oyf dem tish zi hot geleygt kroyt salat, zoyere ugerkes, un tomat ugerkes. Far undzer nochshpayz, zi hot gebakt shtrudel.

Diane hot gegeben undz a menyu, un mir hoben gezogt in Yiddish vos mir hoben gevolt esen. Diane's menyu hot gehot beyde milkhik un fleishig shpayz mit a sakh send-vitshes, zups, salats, frukhts, kompots, un trinks.

Mir zaynen gezesen tsuzamen noent tsu a langen tish, un Diane hot gebrakht undzer shpayz gikh. Ales is geven zeyr gut un take "geshmak".

Noch dem brokhe oyf'n broit, mir hoben gezesen, geshmust, un gelakht. Es is geven a mekhaye far undz ale.

A dank tsu Diane. Zi hot gearbet zeyr shver. Mir vintshen Diane a sakh mazel in ir deli.

A dank oykh tsu Temple B'nai Jeshurun far di matone fun forshpayz.

*Denise "Dinah" Hoffman, Yiddish Student*

### TRANSLATION:

On Sunday, the second day in March, the teacher of the Temple B'nai Jeshurun Yiddish class, Shirley Friedman, with her pupils went to the Nosh for lunch. Alan Pearlman made a reservation for 11:30.

The manager of the Nosh, Diane Pratt, cooked for us kishke, knishes, and kashe varenishkes as an appetizer. On the table she put coleslaw, sour pickles and tomato pickles. For our dessert she baked strudel.

Diane gave us a menu, and we told her in Yiddish what we wanted to eat. Diane's menu had both milk and meat food with a lot of sandwiches, soups, salads, desserts, fruits, and drinks.

We sat together by a long table, and Diane brought our food quickly. Everything was very good and really "tasty".

After the blessing over the bread, we ate, chatted, and laughed. It was delightful for all of us.

Thanks to Diane. She worked very hard. We wish Diane lots of luck in her deli.

Thanks, also, to Temple B'nai Jeshurun for donating the appetizer.

*Denise "Dinah" Hoffman, Yiddish Student*

## DMJA COLLECTS FOR DMARC FOOD PANTRY Winners in Food Pantry Drive

**The Kindergarten and First Grade Classes at the DMJA were the winners in the DMARC Food Pantry Drive, bringing in the largest amount as a class. The entire DMJA student body collected over 650 food items for the needy of Des Moines.**

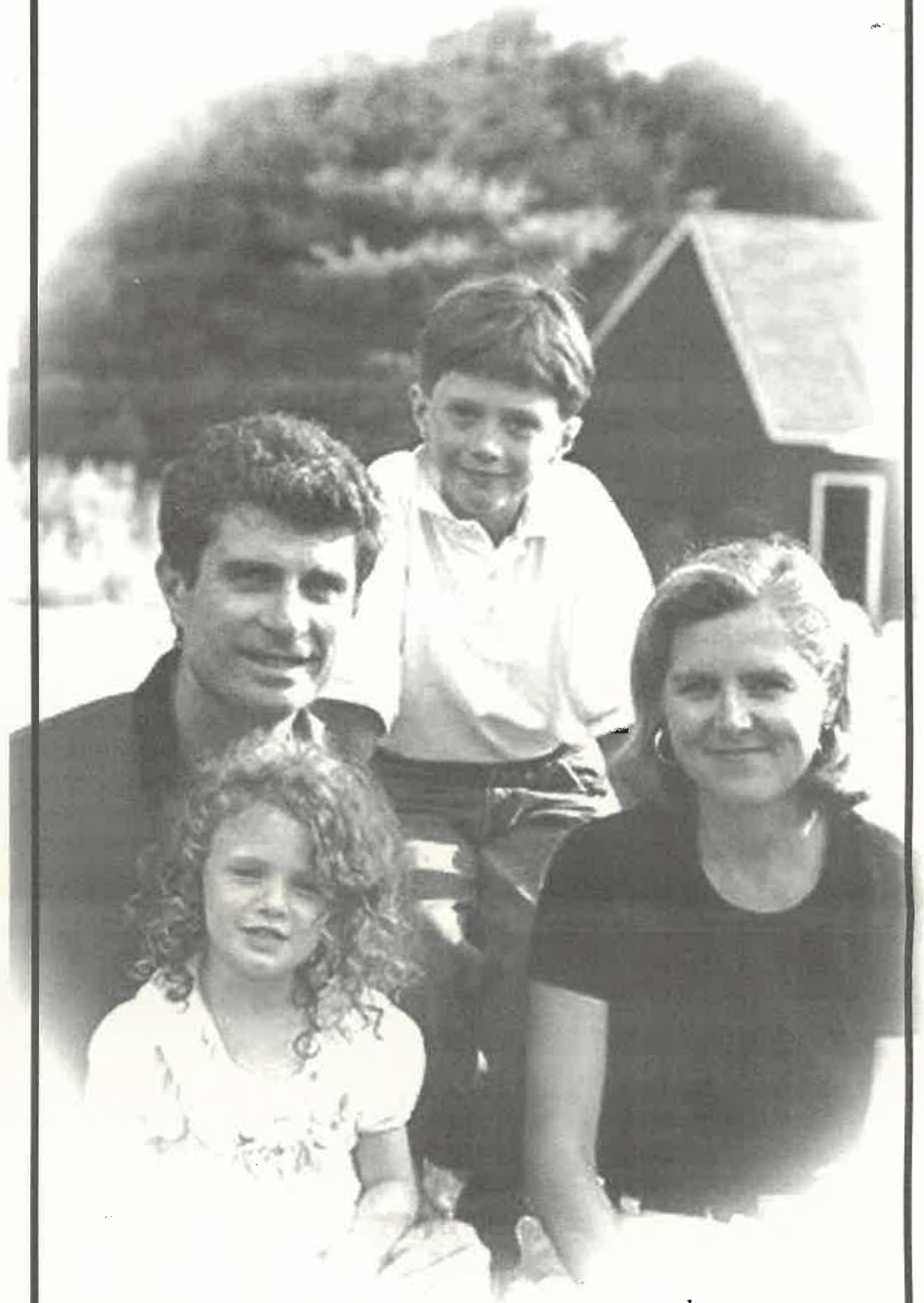


**Kneeling: Hannah Ginsberg, Shlomos Simpsen, Sydney Tobis**

**Standing: Aden Finkelstein, Avi Lekowsky, Moshe Schochet, Yehuda Schochet, Reyna Lekowsky, Sophie Baresh (not pictured Nachama Bidnick, Edel Aron)**

## "Bankers Trust"

A Name We Guarantee!



In these times of financial uncertainty - mergers, acquisitions, and a never ending stream of new faces - more people than ever are moving their complete banking relationships to Bankers Trust.

*We've been here for nearly a century - we'll be here for you tomorrow. We're Bankers Trust. We guarantee it!*

## Bankers Trust

Member of the Federal Deposit Insurance Corporation

[www.bankerstrust.com](http://www.bankerstrust.com)



[in profile]

## SSgt Dan Cohen

FROM THE HALLS OF MONTEZUMA TO THE SHORES OF TEL AVIV....  
PATH LEADS TO US MARINES



What is a nice Jewish boy doing in the Marines? Well, exactly what he wants to be doing, says Staff Sergeant Dan Cohen, who serves as recruiter for the Marines at the recruitment center at 2419 University Avenue in Urbandale.

A talented and intelligent fellow with a fine sense of humor,

Dan earned a perfect score on the military entrance exams and worked as an air traffic controller for the military for five years – a job he'd eventually like to return to.

But wait. There's more.

For someone who proclaimed his reluctance to attend Hebrew school as a teen, Dan has come a long way. Having as a youth been involved in a Jewish camping movement, HaShomer HaTsair, he decided to visit Israel for a year, at age 17. "Culture and tradition drew me," he says, "and I definitely enjoyed the experience. The people are great; the land is great." And so the year he spent working and studying on a kibbutz near Ashkelon turned into a three-year stay and military service in the Israel Defense Forces (which he describes as "interesting.")

Then after returning to the States, Dan – Mr. "I-don't-want-to-go-to-Hebrew-school" – actually taught Hebrew at a congregational school for a year. As he says, he used his fluency in Hebrew to help students learn the language as would a native. "We covered

about four years worth of curriculum that year, so I basically got kids speaking 'pidgin' Hebrew," he says with a smile.

Dan grew up in Kingston, RI. He graduated from the University of Rhode Island where he studied landscape architecture, horticulture, turf and plant science. But not satisfied with either his apparent career path or subsequent employment as a photographer, in car sales, and teaching, he opted to join the Marines. There he has worked his way up from Private to Staff Sergeant (a grade above Sergeant), bypassing opportunities to become an officer on several occasions. (He prefers hands-on duties rather than administrative tasks, he admits.)

As a recruiter of note, garnering his share of awards, Dan works an average of 80 - 85 hours a week, and is on call "24/7" from Uncle Sam. He is on active duty in the Marines.

Although his free time is thus obviously limited, Dan does have hobbies. "I'm a bowler and golfer, and I love crossword puzzles; I do one everyday in the paper," he says.

Over lunch, where a toddler sitting nearby couldn't keep his eyes off Dan's uniform, Dan responded to questions about his decorations, the brightly colored cloth-wrapped bars pinned to the front of his uniform. One that he is obviously most proud of was awarded for outstanding volunteerism. He received this for having organized a bone marrow typology drive at the Quantico, VA Marine base. "For six months I worked an extra 40 hours beyond my military duties, organizing the drive," he states. "Normally they get about 1% - 2% involvement on a base. And we attained 10% participation -- a little over 2,000 donations of blood samples to be typed."

Staff Sergeant Dan Cohen's service to people and to his country has been exemplary. We wish him all continued success in his career and are proud that he resides with us in Des Moines.

[commentary]

## Maps Reveal True Intentions of Palestinian Authority

by Mark Finkelstein

Palestinian Authority (PA) maps of Palestine label adjoining countries as "occupied" but fail to identify Israel. They label cities of Arab significance within the land of Israel - but fail to identify Tel Aviv, an Israeli city.

One such map is located on the site of the Palestinian Authority's Central Bureau of Statistics at [www.pcbs.org/lish/pal\\_map.htm](http://www.pcbs.org/lish/pal_map.htm).

What the map reflects, without doubt, is the deeply felt belief among many most Palestinians that the entirety of the land is theirs and that Israel as a sovereign country does not exist. But that is not what the PA wants Americans to believe.

The PA, for political reasons, would rather that people view the conflict as only about the West Bank and Gaza (and not about the desire of the Palestinians to do away with Israel.) For when it is only about the territories (with the problems that need to be solved), there is a tendency even among well-meaning people to view the Palestinians as resisting "the occupation."

It is another matter entirely to view the homicide bombings as tools to destroy Israel entirely.

## Large selection of kosher foods!

Here at Dahl's recognizing the needs of our customers is very important to us. Stop by any of our Dahl's locations and choose from our large variety of kosher foods.

- Pharmacy
- Delicatessen
- Cafeteria
- Bakery
- Photo Processing
- Video & DVD rental
- Dry Cleaning
- Much More



"The Markets Designed With You In Mind" Visit us online at [www.dahlsfoods.com](http://www.dahlsfoods.com)

If you often feel tired,  
it could be anemia.

If you're Jewish,  
it could be  
Gaucher Disease.



You may never have heard of Gaucher Disease (pronounced "Go-Shay"). But it is the most common genetic disease affecting Jews of Eastern and Central European descent. In fact, approximately one out of every 14 carries the Gaucher gene – it is far more prevalent than Tay-Sachs.

Gaucher warning signs include:

- Fatigue
- Anemia
- Bone pain
- Easily fractured bones
- Bleeding problems and easy bruising
- Low platelet count
- Enlarged liver or spleen

Gaucher can affect anyone and not age or gender specific. Fortunately, Gaucher can be detected early with a simple test. And treatment lets people with Gaucher live full, productive lives. Get the facts now.

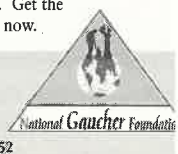
For additional information,  
testing and treatment, call toll-free:

**1-800-GAUCHER**

© 2002, National Gaucher Foundation

5410 Edson Lane  
Suite 260  
Rockville, MD 20852

[www.gaucherdisease.org](http://www.gaucherdisease.org)





ANNOUNCING .....

# A Jewish Community Mission to Israel November 9 - 20, 2003

## including participation in the General Assembly of Jewish Federations to be held in Jerusalem

### A Twelve day trip to Israel valued at \$3100.

After subsidies, the basic trip can cost you as little as \$600 (double occupancy) + your own transportation to/from NY + \$175 est. tip for guide and driver.

**No penalty for a cancellation made as late as two weeks prior to departure. Sign up now!**

Subsidies for qualified applicants, while funds are available:

**UJC SUBSIDY OF \$1,000** includes General Assembly Registration and costs. Brings cost down to \$2100 + tips + domestic air

**PLUS** Jewish Federation subsidy of \$500 for a minimum gift of \$500 to the 2004 All-In-One Campaign. With UJC subsidy, brings costs to \$1600 + tips + domestic air.

**OR** First time in Israel? Or haven't visited in at least 18 years? Jewish Federation subsidy of \$1,500 with minimum Federation gift of \$365 to 2004 All-in-One Campaign. With UJC subsidy, brings costs to \$600 + tips + domestic air. Contact the Federation for application forms.

### PRICES INCLUDE:

EL AL from JFK/NY. While available, business upgrade seats can be purchased at an additional cost.

5 Star hotels in Tel Aviv and Jerusalem.

Includes all breakfasts, most lunches and dinners during the pre-Mission, including Community Shabbat Dinner in Jerusalem.

Includes transportation to and from Ben Gurion Airport, bus and touring costs, program entrance fees, guides, etc.

Includes General Assembly program registration fees. Does not include lunch or dinner during the General Assembly.

Note: You are responsible for your own air transportation to and from JFK/NY.

### TRAVEL ITINERARY:

**November 10** Tel Aviv Overnight Sheraton Tel Aviv on the coast

**November 11 & 12** Visit our Partnership 2000 region, the Western Galilee  
Stay at Kibbutz guest house in Nahariyah

**Rabbi Halevi's spirituality track: November 12 & 13** Experience in Sefad  
Two nights at Rimon Inn, Sefad

**November 13** Overnight at Rimon Inn, Sefad

**November 14, 15, 16** Return to Jerusalem for touring & Shabbat

**Evening of November 16 through late afternoon November 19**  
General Assembly in Jerusalem, Gala Musical and Speakers - Opening Ceremonies

**November 18** Spend one day touring Jewish Agency And JCD sites to different areas in Israel

This Mission is being conducted in cooperation with the Jewish Federations of Omaha, San Antonio, and Louisville.

**Optional track\*:** special programming on spirituality and side trip led by Rabbi Baruch HaLevi, Tifereth Israel Synagogue.

### Turn in applications as soon as possible to the:

Jewish Federation of Greater Des Moines, 910 Polk Blvd, Des Moines, IA 50322

For information contact 515/ 277-6321 jcrc@dmjfed.org fax: 515/ 277-4069

\* Extra charge for Rabbi HaLevi's program. For information, contact rabbi@tifereth.org or call 515-255-1937.

Whether you're buying, selling,  
or building, it's important to  
have a real estate professional  
working for you, who really  
understands your needs.



**Joyce Birnbach**  
REALTOR®

Residential  
Vacation - Investment Properties

Iowa & Florida  
Licensed Real Estate Sales Agent

515-249-0384  
515-453-5184



### ISRAEL TRAVEL SUBSIDY POLICY

#### Of the Jewish Federation of Greater Des Moines

##### rev. 5/03 coordinated with GA subsidy availability

The Jewish Federation of Greater Des Moines offers individual subsidies to travelers in an approved program to Israel upon application. Applicants must meet requisite qualifications.

A Federation subsidy may be applied to Missions conducted by our Federation, by the United Jewish Communities or by our local synagogues. Trips organized by our local synagogues must include one day or longer spent in our Partnership 2000 region, the Western Galilee, in coordination with Partnership 2000 officials.

##### To be considered for subsidization by the Federation, an applicant must:

1. Be of or married to someone of the Jewish faith.
2. Have made an individual or family gift to the All-In-One Campaign for the prior campaign year.
3. Must commit, as part of the application process, contributing at least \$365 to the current year's All-In-One Campaign\* and will be expected to maintain or raise their pledge the following year.
4. Have resided within the area served by the Federation of Greater Des Moines for at least one year.
5. Be in good standing with the Federation.
6. Volunteer for a Federation or synagogue committee for at least one year, within one month of returning from Israel.
7. Agree to volunteer time at one of the All-In-One Campaign Telethon sessions in some capacity.
8. Complete and submit an application form within deadlines established by the Federation for each trip, usually no later than three months prior to the month in which your trip is scheduled to depart. The application form will contain questions pertaining to the above qualifications. In addition, applicants will be required to commit to obligations, such as those listed above. Deposit requirements may apply.

##### Amount of subsidy:

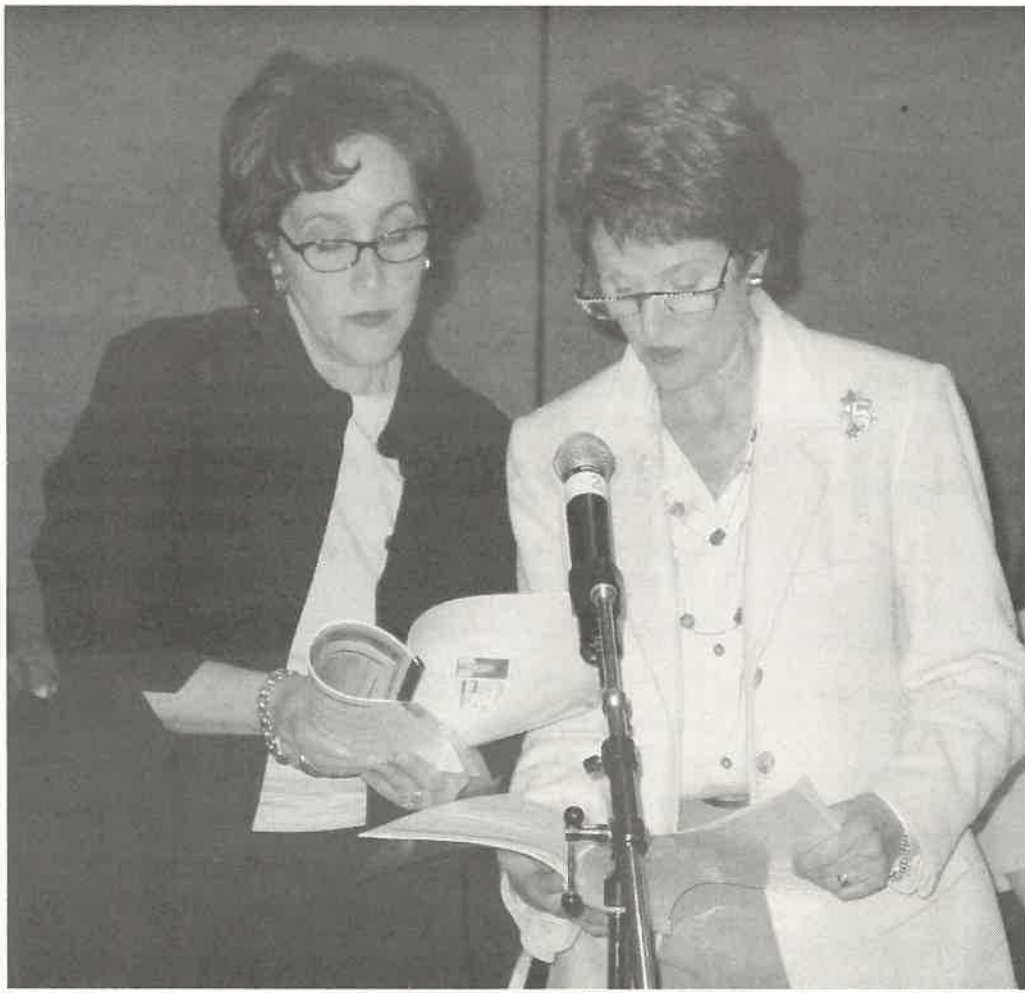
- Under specified conditions\*, subsidies of up to \$1,500.00 are available for applicants 21 and over who are either first-time travelers to Israel or who have not traveled to Israel for at least 18 years. Adults who have traveled more recently to Israel are eligible for a subsidy of \$500.00 with a minimum gift of \$500 to the 2004 All-In-One Campaign.
- Subsidy from UJC depends on availability of UJC funding, in accordance with their policies.
- If application is being made for individuals between the ages of 18 and 26, please read the following information about the Birthright Israel trips to Israel, participation in which would be precluded if one were to have already participated in an institutional trip to Israel. Birthright Israel provides free peer-oriented trips to Israel for individuals between the ages of 18 and 26 who have not been on an institutional trip to Israel before. (Trips made by individual families would not disqualify one for the Birthright Israel program.) For more information about this program, contact the Federation or access [www.birtherightisrael.org](http://www.birtherightisrael.org)

\* All those above age 21 provided a Federation subsidy will be solicited by the All-in-One Campaign.  
\*\* An exception is made for those who are designated by the Jewish Federation to serve as official representative(s) on a trip.

\*\*\*Subsidies will be awarded subject to the availability of funds and at the discretion of the Jewish Federation.

Applications are available from the Jewish Federation of Greater Des Moines, 910 Polk Boulevard, Des Moines, IA 50322 (515) 277-6321 and on the website [dmjfed.org](http://dmjfed.org)





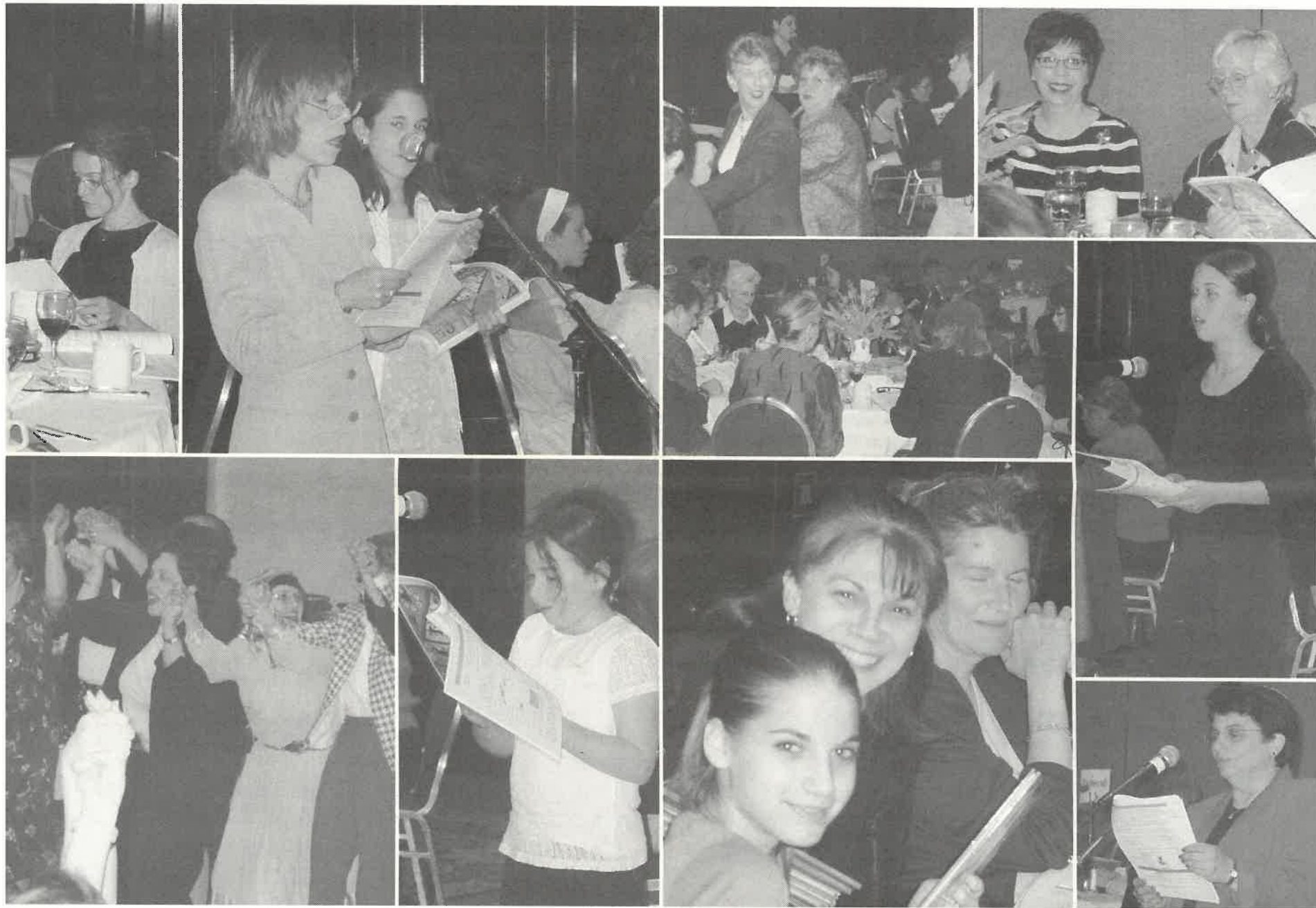
# *The Second* **Women's**



# Celebrating Together!

The 2nd Women's Seder sponsored by the Jewish Federation brought together 110 women from our community. Laura Berkson played a special role, leading the singing and inspiring ruach! Seeing our children dancing and each generation, from granddaughter to grandmother, enjoying the evening together was very moving. We look forward to next year's Seder with even more participation! A sincere thank you to all who helped make this a very special event.

Debbie Friedgood and Debbie Gitchell, Co-Chairs



# Seder

April 2003





## Robin Garrington of Meservey-Thornton Schools

### History and Human Rights Focus of Teacher's Approach to Holocaust Education



*In this column, we introduce you to Robin Garrington, an Iowa school teacher who is taking an intensive and personal approach to Holocaust education.*

Robin, who came from Clear Lake and majored in elementary education, with endorsements in English and special education, teaches 8th grade Language Arts and Reading for the Meservey-Thornton Community School District near Mason City. Her two-to-three month unit on the Holocaust, which is not mandated by the school, focuses on human rights objectives and makes use of resources drawn largely from her own collection of materials.

Jewish Press: Robin, what is it about the Holocaust that speaks to you, as a teacher?

Robin Garrington: I was struck by the incomprehensible amount of planning, strategy, and energy devoted simply to killing other human beings. The Holocaust illustrates mankind's very worst behavior and on the other hand, the challenge that brought out man's very best behavior, in response. A major lesson drawn from the Holocaust is that each one of us has the potential to make a difference, to contribute in a positive way to society, even under the worst of circumstances.

JP: What do your students tend to know about the Holocaust prior to your class and what do they learn, in the process?

RG: Unfortunately, the students know very little going in. It is not a topic they have encountered in any depth, nor is World War II or the Vietnam War either, for that matter. By the end of the unit, however, they learn about the countries involved in the Holocaust, where the camps were and all about the camps, the resistance that occurred, examples of how different countries were infected with varying degrees of anti-Semitism, and how it took until after Pearl Harbor before our own country entered the war. The students typically are bothered by our initial lack of involvement but then they develop a pride and respect for our country when they learn how we were finally involved and how we liberated the camps. They become inspired, as well, when they learn about how young people enlisted to save other people.

JP: How do you personalize your instruction?

RG: It is clear that the human energy expended to kill children and whole families is fueled by hate. So we talk a lot about stereotypes, discrimination and scapegoating. And the students learn to see that the derogatory comments that creep into our own conversations can be, on a smaller scale, insulting and hateful. At various points in the term, I give the students an opportunity to write reflective essays.

JP: What instructional materials do you use?

RG: We start by reading the Diary of Anne Frank, which is, in fact, mandated. To preface this we read background information about WWII and have studied the stages of the Holocaust (from Identification, through

Expropriation, Concentration and Annihilation) and how the Nazi party proceeded to occupy most of Europe. This leads to a better understanding of the conditions and setting underpinning the Diary. We then supplemented this material with a very fine ten-chapter resource that focuses on the Frank family and why they moved to the Netherlands. This particular text provides more background of World War II and how Hitler came to power. After this, each student read an additional non-fiction account from the era and we view a number of films, including Spielberg's The Final Days. In addition I use a number of exemplary data base sources on the Web. We also try to have the students see a dramatic production.

JP: What production have they seen?

RG: I was able to take the students to see a production of the Diary in St. Paul at the Parksquare Theatre and they also visited a synagogue in St. Paul. We had to finance this partially by ourselves, our district paying for half. The students worked very hard. They spent their own time making book-marks for sale and holding a book sale and bake sales. But it was worth the effort.

JP: And your students write reaction essays?

RG: Yes, essays and poems. For the past two years, I have collected their poems and had them duplicated and bound in a book that honors the people victimized in the Holocaust. The books are for our students to keep, but we've also given the books out to our community.

I am always impressed by their poetry. Every poem has a different voice which echoes the emotional connection and social

insight gained from the study of the Holocaust. The students approach the assignment very personally. In a sense, the poems are like memorials. We discuss the idea that understanding the Holocaust and remembering the victims and survivors their poetry is their own act of resistance. Their poetry gives voices to people whose own voices weren't heard, and it gives honor and remembrance to people the Nazis tried to erase and forget. Humanity wins as long as nothing like it ever happens again.

JP: What has been your goal?

RG: My goal has been to instill empathy and understanding in my students. Let me give you an instance of how the course has helped influence a student for the better. There was a particular student who, when we first started discussing the Holocaust, said something to the effect that he thought that Hitler was "kind of cool." Right away said, no he wasn't. I expect the students to be more mature and serious than that. At the end of the term, in his reflective writing that student indicated that he'll "never make that comment ever again." And I believe him. It's not from me preaching; it comes from his understanding. Through compassion, students connect in a very personal way. They become enlightened and, I hope, determined to stand up for what is right.

JP: On behalf of the Jewish Community Relations Commission, which seeks to promote Holocaust Education, I commend you for the significant work you have been doing within this important area of study. Thank you for your self-initiative. We hope you will continue your efforts to teach the lessons derived from this very dark and tragic period in human history.

# VOGUE

VISION

## OneHour Optical

### YOUNKERS

STYLE • QUALITY • SERVICE • INTEGRITY

### VISION CENTER



## EYE-MART OPTICAL OUTLET

We are here to care for your  
Eyewear needs  
Eye Exams are available

for the location nearest you call 1-888-367-2020

# STRENGTH THROUGH diversity



Your investment in Israel Bonds helps settle Jews from around the world, strengthens the Jewish homeland through building vital infrastructure and helps diversify your financial portfolio through a wide offering of targeted securities.



This is not an offering, which can be made only by prospectus. Read it carefully before investing. Member NASD, SIPC

Development Corporation for Israel  
State of Israel Bonds  
9666 Olive Blvd., Suite 344  
St. Louis, MO 63132  
Contact: Bob Aisenfeld,  
Regional Representative  
**314-432-1172**  
**800-989-2663**

**8th Zero Coupon Bond 5.90%**  
Effective yield to maturity and current purchase price of \$3,382 for bonds purchased through October 25, 2002. Matures at \$6,000 10 years from issue date (first day of the month following the month in which subscription is accepted by Fiscal Agent).

**3rd Jubilee (Series A) Issue Bond 4.00%**  
Fixed annual interest rate for bonds purchased through October 25, 2002. Matures 5 years from issue date. Minimum Subscription \$25,000.

**3rd Jubilee (Series B) Issue Bond 5.40%**  
Fixed annual interest rate for bonds purchased through October 25, 2002. Matures 10 years from issue date. Minimum Subscription \$25,000.

**4th LIBOR Floating Rate Issue (LFRI) Bond 2.50%**  
Interest rate for bonds purchased through October 2002. Based on 75 basis points (fixed at time of purchase) plus the 6 month LIBOR rate in effect on issue date, and recalculated thereafter on March 1, June 1, September 1 and December 1. Minimum subscription: \$5,000 (\$3,000 or \$3,500 for IRAs only). Matures: 10 years from issue date.

**Development Issue Current Income Bond**  
4.00% annual interest rate. \$500 and increments of \$500. Matures 15 years from issue date.

**Development Issue Savings Bond**  
\$500 and increments of \$500. Matures 15 years from issue date at 180% of issue amount, resulting in an effective yield to maturity of approximately 4.00%.

**2nd Chai Bond**  
Purchase price: \$136. Matures in 5 years at \$180. Non-transferable. Not eligible for early redemption. May only be purchased for/registered to an (only one) individual.

Matured Bonds: After maturity, bonds no longer earn interest. Issues subject to availability.



## Community Holocaust Commemoration



The community paused on April 30 to commemorate Yom HaShoah. Within the ceremony, students from the Jewish Federation Community School and the Des Moines Jewish Academy honored members of the survivor community Charles Anolik, David Shiel, Linda Fishman, Peter Pintus, Meyer Shnurman, Rose Szneler and Jacob Laizman. Governor Thomas J. Vilsack issued a proclamation for the Days of Remembrance. Keynote speaker was Allen Wolnerman, a child of survivors. Music as provided by the Kol B'yachad Choir from Temple B'nai Jeshurun, host synagogue. Thank you to all who helped with the program. At top left, Dr. Mark Schlenker, honorary Consul for the Democratic Republic of Germany.

## THOUSANDS BACK U.S.-ISRAELI TIES AT AIPAC POLICY CONFERENCE

More than 4,000 pro-Israel activists from around the country gathered in Washington March 30 through April 1 for the largest policy Conference in AIPAC's history.

With Israel continuing to face Palestinian terrorism and other threats, and the United States at war, the activists paid tribute to those who have stood up for Israel and to the American soldiers now risking their lives in Iraq, who were honored with a special prayer.

Leading American and Israeli policy-makers, including Secretary of State Colin Powell, National Security Adviser Condoleezza Rice (whose remarks were off-the-record), Israeli Foreign Minister Shimon Peres and the Republican and Democratic leaders of the House and Senate, spoke of how important it is for the United States and Israel to work together to confront the mutual threats facing the two allies.

"All of us here tonight are brought together by a deep commitment to Israel's security, prosperity, and freedom, and to the strongest possible relationship between Israel and the United States," Powell said.

Israeli Foreign Minister Shimon Peres, making his first speech in the United States since being sworn into office, praised the United States for confronting those seeking to harm the United States, Israel and the rest of the Western world.

"America is taking on the emerging threat of the 21st century, that of terrorist organizations allied with rogue regimes, armed with weapons of mass destruction,"

he said. "Israel salutes the president and the people of the United States for the courage and determination in ridding the world of this clear and imminent danger."

The top congressional leaders, Senate Majority Leader Bill Frist (R-TN), Senate Democratic Leader Tom Daschle (SD), Speaker of the House Dennis Hastert and House Democratic Leader Nancy Pelosi (CA), all voiced support for a strong U.S.-Israel relationship and said that the Palestinians must end terrorism against Israelis before any negotiations can succeed.

Half the Senate and nearly half of the House participated in the Conference, including during the Monday night gala banquet.

The conference began on a stirring note when student delegates from each of the 60 college campuses where AIPAC is active, paraded through a cheering crowd in the packed Washington Hilton ballroom holding placards representing petitions supporting the U.S.-Israel relationship. Since September, pro-Israel student activists have garnered more than 55,000 signatures on the petitions, all of which will eventually be published as ads in each school's newspaper.

Jesse Gabriel, a pro-Israel activist and the student body president at University of California at Berkeley, addressed the conference, thanking AIPAC for supporting pro-Israel student activism.

Dr. Marty Rosenfeld, Dr. Glenn Purnell, Bud Hockenberg, and Steven Beckerman of AIPAC were in attendance.

## ArtHouse 2nd Anniversary



Featuring New Works by  
**Karen Strohbeen  
& Bill Luchsinger**

Friday June 13, 5pm  
ArtBar, including dinner and cocktails  
till 10 pm. Entertainment by  
Willie James Shay.

**ArtHouse**  
On Ingersoll

2811 Ingersoll Avenue  
515 243 6601 tel 515 243 8777 fax  
www.arthouse-desmoines.com



## New Findings Help Ashkenazi Jewish Children Born Deaf And Have Progressive Loss Of Sight

Deafness in both ears and progressive loss of vision are the indicators of Usher syndrome, a genetic disorder. This syndrome involves deafness at birth, progressive blindness and balance problems. In 1861, a physician working in Berlin described the clinical features of Usher syndrome in Jewish individuals. Now, 140 years later, there is an opportunity to offer help to those individuals who inherit this syndrome as reported in the April 24, 2003 "New England Journal of Medicine".

Dr. Tamar Ben-Yosef, of the National Institute on Deafness and Other Communication Disorders at NIH, identified a mutation, R245X, of an Usher syndrome type 1 gene, which appears to account for a large proportion of USH1 in the Jewish population who came from eastern Europe.

In earlier studies elsewhere, a founder mutation was identified in the GJB2 gene, which is carried by 4% of Ashkenazi Jewish individuals. This allowed identification of the R245X mutation, indicating high carrier frequencies of R245X in the Jewish population. Carriers are individuals who, although having no symptoms of the disorder, transmit their single copy of the disabled gene to their descendants.

*"This is a highly important discovery. When a mutation has a high carrier frequency in a population and we can identify it, basic science translates directly to clinical possibility for these children."*

"Knowledge is truly empowerment in this case," noted Dr. James F. Battey, Director of the National Institute on Deafness and Other Communication Disorders. "Molecular diagnosis, carrier screening, and genetic counseling all will lead to earlier intervention ... while the child can still take advantage of the sensory input still available in the earlier years."

Carrier screening and genetic counseling will allow parents to prepare for the educational and social needs of a child who has Usher syndrome type I. Parents will be able to focus on communication skills that will be needed by their child.

Screening for R245X would allow additional information to be provided to individuals who will already be screened for Tay-Sachs, Gaucher and Canavan diseases as they seek to have more information about their genetic history.

For information, contact Marin P. Allen, Ph.D. at (301) 496-7243 or allenm@ms.nidcd.nih.gov.

## ISRAELI SCOUTS MUSICAL TROUPE TO PERFORM AT THE CASPE TERRACE JULY 21

You can expect a colorful and high energy performance of Hebrew and English songs and dances from the touring company of Israeli scouts set to strut their stuff in the Bucksbaum Auditorium at the Caspe Terrace, the evening of July 21st. (Details will be forthcoming.) The troupe of ten highly talented scouts, accompanied by two adult leaders, is on their summertime trip across the United States and Canada.

Best known as the Friendship Caravan, these teens bring a taste of Israel – the vitality of Israel, wherever they visit. You'll love them! Plan to bring your whole family!

## YWCA WOMAN OF ACHIEVEMENT AWARD TO LOIS FINGERMAN, JUNE 4

Lois Fingerman will be honored by the YWCA of Greater Des Moines at the 22nd Annual Women of Achievement Awards Luncheon on Wednesday, June 4, 11:45 am at the Polk County Convention Complex. The award recognizes outstanding women who have influenced the community through their volunteer contributions to humanity with an emphasis on the empowerment of women, children and the promotion of racial justice.

Cited for her advocacy on behalf of women and children, Lois has provided her

## SONGS FROM PRE-STATE ISRAEL ON INTERNET SITE

"Songs we loved to hear" – a selection of old favorite Israeli songs have been posted on the Internet by the National Sound Archives at the Jewish National and University Library of the Hebrew University of Jerusalem. The nostalgic melodies can be heard by logging on to the library's Internet site: <http://jnul.huji.ac.il>.

The recordings are part of the David and Fela Shapell Digitization Project at the library, which is making rare library material accessible to the general public.

The National Sound Archives preserves thousands of recordings that reflect the Jewish and Israeli heritage, going back to the early part of the last century. [From the Jewish Agency's online magazine, located at [www.jafi.org.il/agenda](http://www.jafi.org.il/agenda)]

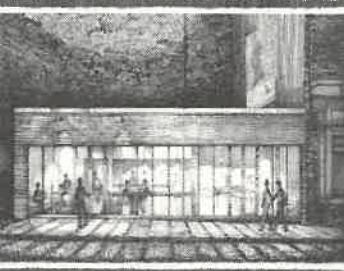
selfless time, talent and skills to Talented and Gifted Programs both local and statewide. Polk County Health Services, Temple B'nai Jeshurun, Des Moines Art Center, Iowa Council for International Understanding, Child Death Review Team, Friends of IPTV, Des Moines Playhouse, and to committee work within Jewish Federation's Jewish Family and Community services.

Also being honored at the luncheon are Paula Mahone, M.D., Billie Ray, and Rev. Carmen Lampe Zeitler. For tickets call 244-8961 x 410.

## BASIL PROSPERI

Now serving dinners on Friday and Saturday nights.

BASIL PROSPERI



407 East Fifth Street

artisan breads, European cheeses and dining  
in the heart of Des Moines East Village

call 243-9819

Coming Soon - Wine and Cheese Night Thursdays!

## Manage how and when you bank, with Preferred Banking.

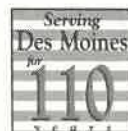
Take a look at West Bank's Preferred Checking. It's a broad range of financial solutions tailored to meet your individual needs and provide you with financial advantages you need to build your future.

- No annual fee debit/ATM card<sup>1</sup>
- Competitive interest rate<sup>2</sup>
- Unlimited check writing<sup>3</sup>
- Free checks<sup>4</sup>
- Discounts on loans
- Free internet banking
- Free telephone banking
- Free ATM banking
- Free single-signature Travelers Cheques
- FDIC insurance

Sign up today for Preferred Banking. Stop by one of our eight convenient metro locations.

(1) Limit two cards with credit approval. (2) Interest rate may vary depending on balance. Interest is paid on daily balances in excess of \$1,000. (3) \$500 minimum balance to open. \$10 monthly fee if combined daily balance falls below \$10,000 during checking account statement cycle. (4) 200 standard or 150 duplicate checks per year.

**West Bank**  
Decidedly Different.



8 CONVENIENT METRO LOCATIONS • 222-2300  
[www.westbankiowa.com](http://www.westbankiowa.com) • Member FDIC





## JCRC's Teachers' Institute Broadens Perspectives



Workshops on Judaism, Israel, the Holocaust and Anti-Semitism were offered to over 15 teachers locally as part of the JCRC's 24th Teachers' Institute. Pulitzer prize nominee Daniel Levitas is shown at left and below, along with program co-chairs Elana Schneider and Roselind Rabinowitz, and clinicians Beth Seldin Dotan, Rabbi Baruch Levi. Also shown: clinicians Pnina Luban and Ayelet Kleinman (with Israeli flag.) Below: Robin Garrington, Sheldon Rabinowitz, Carol Brown (our educational consultant), Roselind Rabinowitz and Milt Brown. Thanks are extended to community members that served as hosts and to Tifereth Israel Synagogue for use of their facilities.

## Iowa Jewish Senior Life Center

### Recognition Ceremony Honored Recent Endowment Fund Donors

On May 27, The Life Center held a Donor Recognition Ceremony honoring recent gifts to the Center's Endowment Fund.

The Endowment Fund was established to ensure The Life Center's continuing ability to fulfill its mission of service for our seniors. The outstanding rehabilitation and long-term care services provided

The Life Center are supported by the generous gifts to the Endowment Fund by our community members.

When gifts are made to the Endowment Fund, those contributions are recognized on the Cornerstones board located in The Life Center Atrium. This

colorful board contains individually engraved tiles indicating the various levels of monetary support. Monies donated to the Endowment Fund enable The Life Center to further its traditions of excellence in caring.

The Board of Directors, Residents and Staff of The Life Center extend their gratitude to all those who have supported the Endowment Fund in the past, as well as for the ongoing generosity of the community. For more information about the Endowment Fund or how to contribute to it, please contact Stephen Blend, Executive Director, at (515) 255-5433.

## aces and places]

### EAH SWARTZ WINS PRIZE FOR ESSAY

EAH Swartz, 5th grade student at the Des Moines Jewish Academy, was awarded Third Place in her grade in the NCCJ's "Understanding the Human Family" Reading and Essay Program. She is shown here with DMJA director Kathleen Ricker. Congratulations to EAH, her family and her school!



### JCRC WORKS IN COALITION

Together with representatives from other faith groups, JCRC works on issues of mutual concern. JCRC Director Mark Finkelstein is shown on the right.

JEWISH FEDERATION OF GREATER DES MOINES

# THE CASPE TERRACE

3320 UTE AVENUE

The Caspe Terrace is a unique facility offering countless options to accommodate your exclusive corporate events, dinners, meetings, presentations or retreats. The Caspe Terrace • Waukee, Iowa • For rental information call 515-277-6321

# CHOCOLATERIE STAM

Pella • Des Moines • Valley West Mall

## Say "Gelato"

(jə-la'tō)

now featured at

2814 INGERSOLL  
OPEN 7 DAYS EACH WEEK  
515-282-9575



## TIFEREETH ISRAEL

### CONFIRMATION AT TIFEREETH ISRAEL SYNAGOGUE

Confirmation for our 10th Grade Class will be on Saturday, June 7, the second day of Shavuot, at 9:15 am. Our confirmands this year are Jake Carpenter, Tegan Isleman, Emily Kreamer, Erez Naggar, Betsy Rosenblatt, Louis Sloven and Ben Weiss. A special Kiddush Luncheon in their honor, sponsored by their parents, will follow the morning services. Tifereth High School graduates and summer campers will also be recognized at this service.

### PART 2 -DES MOINES REGISTER COVERAGE OF THE ISRAELI-PALESTINIAN CONFLICT

Announcing our next Rabbi's Table Dinner on Friday, June 13, 2003 at 6:00 pm in the Atrium at Tifereth Israel Synagogue, 924 Polk Boulevard. The cost is \$18 for adults, \$9 for children under 12. (Limited to 45 people) Enjoy the ruakh of our Erev Shabbat services at 6:00 pm, and then join Rabbi HaLevi for Shabbat dinner at 7:00 pm. Paul Anger, Editor and Vice President of the Des Moines Register, will discuss the Register's coverage of the Israeli-Palestinian Conflict, as a follow-up to the topic of our last Rabbi's Table Dinner. Audience participation through questions and comments will be welcome.

Please RSVP to the Tifereth office at 255-1137 by Monday, June 9.

### THE BOOK CLUB

is meeting next on Monday, June 16 at 12:00 Noon in the Caspe Library at Tifereth Israel Synagogue. The book *Alone Atop the Mountain* by Samuel Sandmel, a novel about Moses and Exodus, will be reviewed and discussed.

### JUNE IS PRETTY HOT! WHO NEEDS THOSE OLD FURS?

Tifereth Israel's Arts and Heirlooms wants your old furs, fur pieces and fur hats. Don't pay for storage any longer. June is Fur month at Arts and Heirlooms! But we'll take any other items you have, too! Items donated to Arts and Heirlooms are tax deductible, and may be left at Tifereth during office hours and a sheet can be picked up so you can itemize your contributions to the sale. Remember please, we want items in good condition - silver, china, crystal, linens, miscellaneous novelties, collectibles, purses, scarves and jewelry, as well as art. If you are moving and have small furniture items, Arts and Heirlooms may be interested. Call Amy Brody at 226-0066 with any questions.

**Let us know about family members who are graduating! Send your good news to [jcrc@dmjfed.org](mailto:jcrc@dmjfed.org)**

## TEMPLE B'NAI JESHURUN

### RABBI KAUFMAN TO BE INSTALLED AT TBJ JUNE 13TH

Following the congregation's 6:00 p.m. Annual Meeting, David J. Kaufman will be formally installed as Rabbi at Temple B'nai Jeshurun on June 13th during the erev Shabbat service. Rabbi Jay Goldberg, who served as the Temple's rabbi from 1967 to 1983 and a long-time friend of the Kaufman family, will give the installation address.

Rabbi David Jay Kaufman, 31, is a native of St. Louis, where he has most recently served as Assistant Rabbi of Temple Emanuel. He was ordained in June 2001 at Hebrew Union College, Cincinnati, OH, and served as senior rabbinical intern of The Valley Temple. He holds degrees from the University of North Carolina in religious studies and political science, and from Duke University in the history of Judaism.

Rabbi Kaufman has written numerous liturgical pieces, foremost of which is a service for bar and bat mitzvah youth that is particularly welcoming non-Jewish family and friends.

He and wife Julie have two daughters, Hanna, three, and Eliana, one year old. He is the son of Drs. Robert and Mildred Kaufman of University City, MO.

Congregation and friends are invited to the service of installation at 7:00 p.m. and the reception following, where there will be opportunity to greet the Kaufmans and Rabbi and Mrs. Goldberg.

**Hockenberg** continued from page 1

Mr. Hockenberg is serving the remainder of a five-year term expiring in January 2006.

Created by a unanimous act of Congress, the Museum is America's national institution for Holocaust education and remembrance. A unique public-private partnership, the Museum brings the history and lessons of the Holocaust to Americans from all walks of life through educational outreach, teacher training, traveling exhibitions and scholarship. Since its dedication in April 1993, the Museum has welcomed more than 19 million visitors, including 6 million children. The Council consists of 55 Presidential appointees in addition to 10 Congressional representatives and three ex-officio members from the departments of Education, Interior and State. For information about the Museum, visit [www.ushmm.org](http://www.ushmm.org).

**Preschool** continued from page 1

The program is planned to include hands-on activities in art, music, reading, math and science readiness. The children will also explore their Jewish heritage through singing and dancing, art, story telling and lots of imaginative play. Each child will be encouraged to learn at his or her own pace. Our low staff child ratio will enable the students to receive the individual attention they deserve.

This fall, the Early Learning Center will be limited to eight students, with hopes to expand in the next year. The Early Learning Center's programs and procedures are still being developed. If you would like to help with this exciting new opportunity or have a child you are interested in enrolling, please contact the DMJA at 274-0453.

# al fresco

def: taking place or located in the open air

# all good

def: an Italian urban eatery featuring specialty pizza, picatta, and everything in between — pastas, steaks, seafood.

Experience al fresco...our patio is open!



CENTRO  
[chen' trô]

1003 Locust Street, 515-248-1780

## PERENNIAL GARDENS

BY LINDA GRIEVE

1633 N.W. 84th Ave. • Ankeny, Iowa • (515) 964-7702

• DESIGN  
Master plans  
Commercial/residential

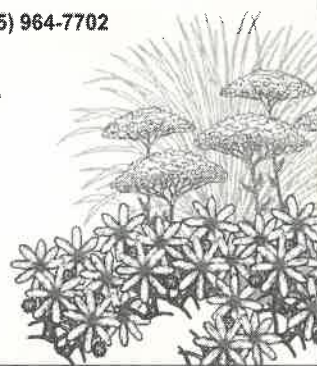
• INSTALLATION  
Construction  
Walls, patios, ponds  
Plant installation  
Trees, shrubs, perennials  
Garden aesthetics  
Trellises, fountains, lighting

• GARDEN MAINTENANCE  
Weekly, monthly, seasonal,  
special occasions

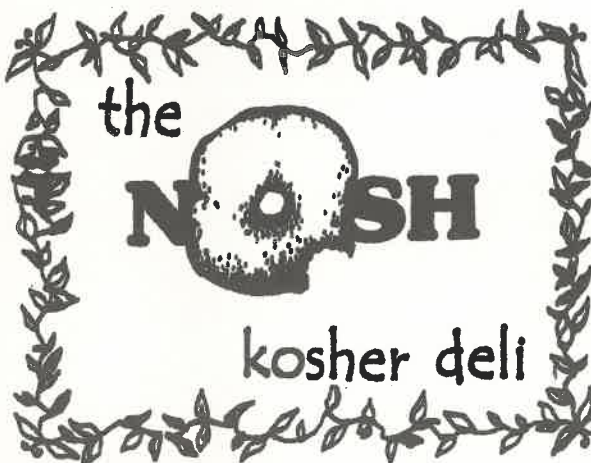
• EDUCATION

• RETAIL SALES  
By appointment

Design • Installation • Maintenance • Education



## Celebrate Summer with ease!



Let us cater your family reunions, summer picnics and parties with **HOMEMADE:**

- Salads
- Party Platters
- Desserts

Now open for private parties after hours

800 1st Street, West Des Moines • phone: 515-255-4047 fax: 515-255-1603



## Meet Charlotte Elmets

by Toni Urban



Unlike most of the Jewish community, Charlotte Elmets has lived in Des Moines her entire life. Her parents, Hilda and Leiser Musin, were Lithuanian and had moved to Des Moines where Charlotte and her sister, Sylvia, were raised. Sylvia, Charlotte's sister, married Hugh Wolff from Cherokee, Iowa and now lives in San Antonio.

Charlotte graduated from East High School and attended the University of Nebraska. During her second year of college, however, she was swept off her feet by the young Harry Elmets, a student at Still College, now known as Des Moines University. Harry has been Charlotte's husband and devoted companion for 57 years and practiced dermatology in Des Moines.

Charlotte gave birth to three sons and spent her years as a mother nurturing their curiosity and creativity. "My Three Sons", the show goes, have reaped the benefit of Charlotte's care and have each become accomplished in their chosen fields. Eldest son, Craig, lives in Birmingham, Alabama and is the chairman of the University of Alabama Medical School Department of Dermatology. He is married to Laurie and has sons, Josh 17, Michael 14, and David 11. Middle son, Steven, received his masters from Columbia and has an accomplished career as an architect, first with I.

M. Pei where he worked on the Louvre addition, and now with architect Moshe Safdi in Boston. Steven's wife Ronni is the curator of European Art at the Boston Museum of Fine Art and they have two children, Jake 17 and Jane 6. Douglas, the youngest of Charlotte and Harry's children lives in Sacramento, California with his wife, Pam, and has his own public relations firm, Elmets Communications. Pam and Doug have twins, Andrew and Lauren, now 13, and Caroline 7.

As a community volunteer Charlotte boasts that she has been on the Board of Temple B'nai Jeshurun with 17 different rabbis and 17 different presidents. She has chaired the Members Council at the Des Moines Art Center, has served on the Metro Opera Board and the board of the Jewish Senior Life Center and is called upon frequently as a volunteer to provide her expertise on special events.

In 1979, Roselind Rabinowitz called upon Charlotte to assist her with her daughter Joy's wedding. At the time Charlotte had no idea that this was her first step into Special Event Consulting! For 25 years

Charlotte has been the impetus for much of the entertaining that has gone on in Des Moines. She has planned weddings, bar mitzvahs and parties. With each event Charlotte leaves her trademark in subtle ways with her special care and attention to details.

It is said that once a local bride, who saw Charlotte's treasure trove of entertaining paraphernalia, said she would like to register for items in Charlotte's basement. Unfortunately for the bride, those items weren't for sale!

Besides Charlotte's way with entertaining, she is a perfectionist in the kitchen with food preparation and presentation. We were fortunate to have Charlotte share her treasured recipe for brownies with us. "Use your recipe as a guide and make adjustments in technique." With that Charlotte shared her very private and sought after recipe for brownies with us with a twinkle in her eye! "It is off the package of Baker's unsweetened baking chocolate squares!"

*continued on page 18*

## Brownies

A recipe from Charlotte Elmets (Dairy)

4 squares Baker's unsweetened baking chocolate  
3/4 cup butter (1-1/2 sticks)  
2 cups sugar  
3 eggs  
1 tsp. Vanilla  
1 cup flour  
1 cup coarsely chopped nuts (optional)

Melt chocolate in microwave oven at 50% power for 2 minutes. Stir chocolate and add butter and continue heating at 50% power for another 2 minutes. Stop to stir, then heat an additional 30 seconds at 50% power.

Stir sugar into chocolate mixture until well blended. Mix in eggs and vanilla. Stir in flour and nuts. (Toast nuts beforehand in the microwave.)

Spread batter in an 8" x 8" greased pan. (Grease pan by spraying it with Baker's Joy; use a pastry brush to spread it into all the corners.) Let the batter sit 20 minutes in pan then bake for 40 minutes at 350 degrees or until toothpick inserted in center comes out clean. Cool in pan. After cooling lift onto cutting board and cut into 1" squares.

If frosting is desired use half a can of Duncan Hines Classic Frosting Mix - Creamy Home-Style (Classic chocolate)!



◆ Minolta Digital Copiers



◆ Computer Network Solutions

◆ Novell  
◆ Windows NT

◆ Sharp Facsimile

◆ Plain Paper  
◆ Thermal

◆ Award-Winning Service

*The Original... for Copier & Fax Equipment*

4201 NW Urbandale Drive • Urbandale, Iowa 50322

(515) 283-0607 • 800-362-1646 • Fax (515) 283-1723




## Landmark Luggage & Gifts

## Travel Center

- Luggage • Business Cases • Gifts
- Small Leather Goods • Travel Accessories
- Free Gift Wrapping & Monogramming
- Gift Certificates • Layaway Plan
- Luggage Repair

See the entire collection of Tumi at:

**Valley West Mall 223-0999**



## FUSION

FURNITURE

**Tues-Fri 11-6  
Sat 10-4**

**500 E. LOCUST ST • DES MOINES •**

**515.244.2303**

Asian Antiques • Vintage Metal • Original Metalwork



Turning ordinary events into ones of magical distinction

*Little Elf*

Tel: 515.221.2322

Decorations for any simcha, wedding bar/bat mitzvah or s'eudot mitzvah.

We use balloons, fabric, lighting and special effects to make your occasion distinct and magical.

Located in West Des Moines by appointment only. call Amy Ratekin today!

email: [maratekin@littleelfevents.com](mailto:maratekin@littleelfevents.com)



# summer 2003

Day	Date	Time	Event
Sunday	6/1/2003	10:00 AM	Women's League Meeting at Tifereth
Sunday	6/1/2003	2:00 PM	IJHS Genealogy Club Meeting at The Caspe Terrace
Tuesday	6/3/2003	11:30 AM	Leisure Time Luncheon at Tifereth, Dr. David Friedgood to speak
Wednesday	6/4/2003	6:00 PM	DMJA End of Year Program at The Caspe Terrace
Friday	6/6/2003	9:15 AM	Shavuot Services at Tifereth
Friday	6/6/2003	9:15 AM	Shavuot Services and Confirmation at Tifereth
Saturday	6/7/2003	10:00 AM	Adult B'nai Mitzvah at the Temple
Saturday	6/7/2003	7:00 PM	Confirmation at the Temple
Tuesday	6/10/2003	5:30 PM	Temple Board of Trustees
Friday	6/13/2003	6:00 PM	Temple Annual Meeting
Friday	6/13/2003	7:00 PM	Rabbi's Table Dinner at Tifereth, featuring Paul Anger, DM Register editor
Saturday	6/14/2003	10:00 AM	Matthew Ryan Mitchell Bar Mitzvah at the Temple
Monday	6/16/2003	12:00 PM	The Book Club at Tifereth
Tuesday	6/17/2003	5:30 PM	DMJA Board Meeting
Monday	6/19/2003	6:00 PM	Federation Executive Committee Meeting at Tifereth
Monday	6/19/2003	7:00 PM	Federation Board of Directors Meeting at Tifereth
Saturday	6/21/2003	10:00 AM	Alexander Pomerantz Bar Mitzvah at the Temple
Sunday	6/22/2003	2:00 PM	Jewish Genealogical Society Meeting at The Caspe Terrace
Tuesday	6/24/2003	AM	Senior Adult Big Band Cruise on the Mississippi
Tuesday	6/24/2003	5:00 PM	IJSLC Executive Committee
Thursday	6/26/2003	12:00 PM	Senior Adult Luncheon at Tifereth
Sunday	6/29/2003	5:00 PM	Federation Annual Meeting at The Caspe Terrace
Saturday	7/5/2003	9:15 AM	Elizabeth Koslow Bat Mitzvah at Tifereth
Monday	7/21/2003	7:00 PM	Israeli Scouts at The Caspe Terrace
Thursday	8/7/2003	12:00 PM	All-Community Calendar Planning lunch at IJSLC
Friday	8/8/2003		Trip to U.S. Holocaust Museum in Washington, DC
Saturday	8/30/2003	9:15 AM	Jonah Sloven Bar Mitzvah at Tifereth

## B'nai Mitzvah

**Matthew Ryan Mitchell**



June 14, 2003

Temple B'nai Jeshurun

Please join our family in celebration as our son, Matthew, is called to the Torah as a Bar Mitzvah

at 10:00 a.m. on Saturday, June 14th at Temple B'nai Jeshurun. The community is invited to a Kiddush luncheon following the service.

Deb and Clif Mitchell

**Alexander Ian Pomerantz**



June 21, 2003

Temple B'nai Jeshurun

With great pride and joy we invite the community to celebrate with us when our son is called

to the Torah as a Bar Mitzvah. The service is on Saturday, June 21, at 10:00 am at Temple B'nai Jeshurun. Please join us for a Kiddush luncheon following the morning service.

Melodee and Jeff Pomerantz

**Charlotte Elms**

*Continued from page 17*

The recipe has been tried, tested and tweaked by Charlotte to make it very special, however. She likes the brownies thicker so she altered the size of the pan. She thinks they taste better when the batter stands before baking and her special preparation of the chocolate and butter —no margarine, please— adds to the lovely taste you experience. It is also important that the oven door remains closed throughout the baking process!

And Charlotte added, "don't ever serve brownies on a brown plate unless you use a doily; they look their best on white ... and don't cover food with aluminum wrap unless you've first covered the item with Saran Wrap - and not one of those other brands!"

So, with a little dash here and another pinch there, we have discovered some of Charlotte's culinary secrets. To her we have afforded the title of "Entertainment Diva".

## Mazel Tov

**Stanley Engman**, past board member of the Jewish Federation, whom the NCCJ honored with its Brotherhood Award for distinguished leadership in human relations and community service.

**Tibby Rissien** and her family on the bat mitzvah of her granddaughter Molly Nicole Rissien in Overland Park, KS.

**Ben and Tracy Kaufmann** on the birth of twins, March 23rd. The boys are named Brandon John and Jacob Alexander.

## For Jewish Singles

**Sun & Fun 2003 in Virginia Beach**

Join hundreds of Jewish singles — 600 singles — for the annual Sun & Fun all-inclusive vacation, August 21 - 24 at one of the East Coast's best vacation spots — Virginia Beach. Party till dawn, games on the beach, interactive events, excursions, entertainment, socials, Shabbat services. Make new friends, meet the man or woman of your dreams! A great vacation. Dietary laws re: Conservative standards. Check it out on the web at [www.SunandFunVAB.com](http://www.SunandFunVAB.com)

## JEWISH SERIES TO AIR ON IPTV

Simple Wisdom with Irwin Kula, a new 5-week, half-hour public television series is hailed by American Public Television as one of its recommended shows. This series addresses the topics that affect us in daily life, such as work, family, money, sex, relationships, and forgiveness. It draws on Judaism as an ancient resource for all providing insight and wisdom to help people build richer lives. The IPTV channel will broadcast the first 5 segments starting on Sunday mornings in June at 7 AM.

**freshness:** /fresh/adj 1: is determined from the time the fish is out of the water to the time it gets to your table...and nobody gets it there faster than Waterfront Seafood Market Restaurant • Wholesale •



**Waterfront Seafood Market • Restaurant Wholesale**

Clocktower Square  
2900 University Avenue  
West Des Moines, IA 50266  
515-223-5106

## We'll Make You Look Great!



Industrial, Medical  
Career Apparel, Postal,  
and Public Safety  
Uniforms & Accessories  
For Function,  
Comfort, & Style

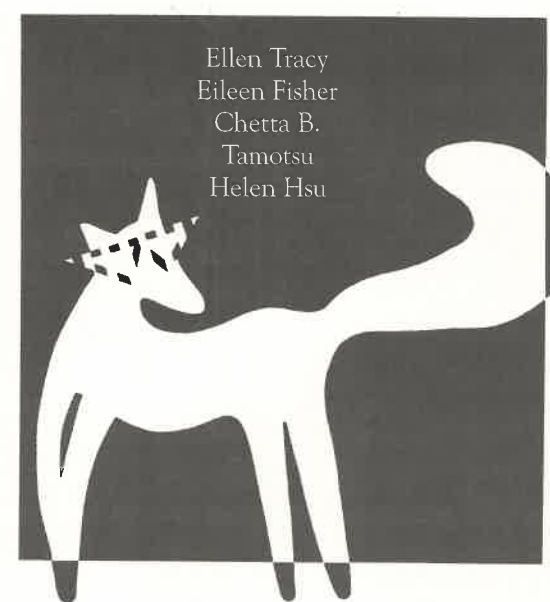


Embroidered and  
Imprinted Sportswear  
& Promotional Products  
for Special Events,  
Business Casual Wear,  
Premiums & Awards

For All Of Your Workwear & Promotional Product Needs



5801 THORNTON AVENUE  
DES MOINES • IOWA 50321  
PHONE: (515) 283-1985



Ellen Tracy  
Eileen Fisher  
Chetta B.  
Tamotsu  
Helen Hsu

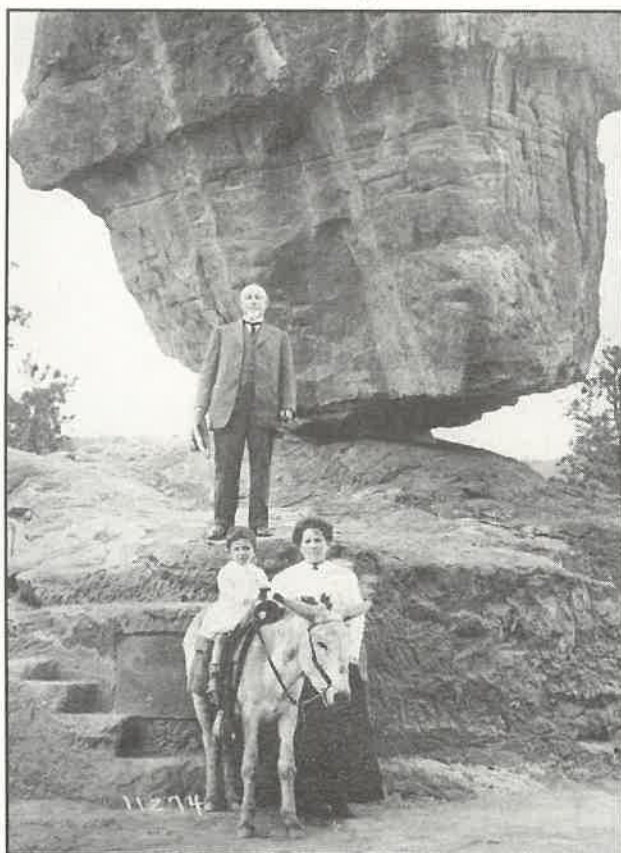
**SILVER FOX**  
INGERSOLL AT 28TH



## From the IJHS Archives: Summer Vacations of Old at Balanced Rock, Colorado



Ben and Alma Weinberg, 1908



Judge Jacob Levy with Morton and Jenny Goldstein Prussner, circa 1913

### Ben and Alma Weinberg, 1908.

Ben and Alma Weinberg moved to Des Moines as a young couple and opened a ladies apparel shop at Walnut and 5th in 1924. After a time in California, the Weinbergs, along with daughters Corrine and Frances, returned to Des Moines in 1933. Ben opened Weinberg Furs in the Davidson Building and later moved to the Shops Building on Walnut Street. Both Corrine and Frances received their talent and love of art from their mother, Alma. Corrine was a portrait artist whose advertisement sketches appeared in the Des Moines Register. After their parents retired, Corrine and Frances continued operating the fur business for 35 years until their retirement.

### Judge Jacob Levy, maternal grandfather of Myron Blank, pictured with Morton and Jenny Goldstein Prussner, circa 1913.

Judge Jacob Levy was the maternal grandfather of Myron Blank. Judge Levy's daughter, Anna Levy of Omaha, married Myron's father, A.H. Blank on September 20th, 1905.

In 1911, A.H. Blank opened the Casino, the largest Motion Picture Theatre in Des Moines and thus began a successful career in the theatre business. Realizing that exhibitors had to be interested in the production of pictures, Mr. Blank, and his old friends Barney Balaban and Sam Katz, helped form the First National Picture Corporation which developed into one of the most successful production and distribution companies of the industry. This organization had under contract stars such as Charlie Chaplin, Mary Pickford, Theda Bara, and other leading headliners of those days. Blank constructed and acquired new theaters in town after town, and by 1926 operated some 78 houses. In 1926, Blank formed the Central States Theatre Corporation, and when Paramount Publix Corporation went into bankruptcy, organized the Tri-States Theatre Corporation in 1933. Blank later became a permanent partner of Paramount Picture Corporation. His son, Myron Blank assumed complete ownership of Central States Theatre Corporation in 1951.

A.H. and Anna Blank established themselves as prominent philanthropists in the Des Moines Community. They are known for the contribution of the Blank Park Zoo and more notably for Blank Children's Hospital. A.H. Blank served on the Board of Directors of some 25 charitable organizations. In 1945 he was given the Des Moines Register and Tribune's annual community award for outstanding service to the City.

## IJHS Jewish Genealogy Society Forming June 22

Are you interested in learning more about your family roots or making sure that your grandchildren know about your roots? Join with Sarah Christiansen and others for the first meeting of the new Iowa Jewish Genealogy Society, Saturday, June 22nd at 2:00 at the Caspe Terrace. All levels of expertise in genealogy are welcome, from those who have been researching their family history for many years to those who have not yet begun. The purpose of this meeting is to actually form the society, elect officers and plan activities that are of interest to you.

Potential activities include local lectures on US resources, how to interview your grandparents (or what information your children may treasure later), trips to the Seminars in Jewish Genealogy (this year it will be in Washington DC where the research archives of the US Holocaust Museum will be open to participants), and potential trips to the Holocaust Museum in Fort Wayne or a guided Jewish genealogy trip in October/November to the Family History Library in Salt Lake City. Locally, we can do internet genealogy, share resources (Sarah has a library of several books that she will be willing to bring to meetings for use at the meetings), and share our frustrations and successes. Everyone, from teenagers to senior citizens is welcome, the only requirement is that you be interested in your own family history.

Contact Jody Hramits at (515) 277-6321 or [iajhs@hotmail.com](mailto:iajhs@hotmail.com)

To learn and view more artifacts related to the Holocaust, visit the Iowa Jewish Historical Society Caspe Heritage Center, open Monday and Thursday 1 - 3:30 pm and by appointment. Call 987-0899 for more information.

## Informative and formal

celebrations for Bar and Bat Mitzvahs, weddings, graduations and other special occasions. Calligraphy services. Professional assistance.

Rocktower Square  
100 University Avenue,  
Des Moines, Iowa 50266  
515-223-6205

*Letter Perfect*



### HILLYER CLEANERS

IN THE ROOSEVELT CENTER

COMPLETE DRY CLEANING. TAILORING & LAUNDRY  
ALTERATIONS ARE A SPECIALTY WITH US.

**863 42ND ST.**  
**PHONE 277-0793 • PICK-UP & DELIVERY**  
**7-6 Mon.-Fri. • 7-4 Sat.**



Tel (515) 282-0205

[www.SimonTire.com](http://www.SimonTire.com)

201 East Walnut Street  
Des Moines, Iowa 50309

Tire Outfitters Since 1914

## List Media®

### List Brokerage & Management

Offering Complete Database Management  
for  
Direct Mail and e-Mail Services

Contact: Suse Daniels-Lerner **515-221-3481**  
Main Office **330-995-0864**

## PATRONIZE OUR ADVERTISERS.

## TELL THEM YOU SAW THEIR AD IN THE JEWISH PRESS.

[ To advertise in the Jewish Press, call us at 277-6321! ]



# Israel Independence Day Trip Was Fun!



Israel Independence Day was highlighted this year by a trip to Omaha to shop the Israeli vendors market at the JCC. We had two bus loads of people attend from Des Moines and Ames! Despite the inclement weather, everybody had a great time. There was food, fun, and festivities in addition to the very fine wares by Israeli artists on display. We thank our community members for participating in this colorful event - some even drove by themselves! We thank the Omaha Jewish Federation for bringing the fair to our region. And we thank those who helped prepare breakfast for our travelers and Lyanna Grund and Adah Ackerman for coordinating plans with the Federation and Ames Jewish Congregation religious schools, respectively.

