



Join us for **GAN SHALOM CAMP 2020!**

Weekly Sessions

June 1 -5 Gan Shalom Summer Kick Off

June 8 - 12 Incredible Insects

June 15 -19 Growing in the Garden

June 22 -26 Creative Art

June 29 -July 2 Ooey Gooey (Closed Friday)

July 6 - 10 Dinosaur Dig

July 13 - 17 Galactic Exploration

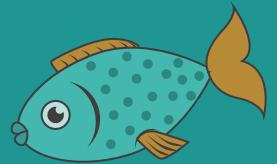
July 20 - 24 Big Wheels

July 27 - 31 Down by the Sea

August 3 - 7 Construction Zone

August 10 - 14 Music Makers

August 17 - 21 State Fair Time



Monday - Friday 9 AM - 4 PM

Full and Part Time Options

Transportation, Before and After Care Available

Gan Shaom

Questions? Contact

ganshalom@jewishdesmoines.org 515.987.0899

CAMP FEES

2 YEAR OLD PROGRAM	\$46 per full day
3-4 YEAR OLD PROGRAM	\$44 per full day

TRANSPORTATION \$25 weekly round trip

Transportation: Pick up at 8:40 AM AND DROP OFF AT 4:15 PM
PICK UP AND DROP OFF LOCATION - TIFERETH ISRAEL SYNAGOGUE

BEFORE AND AFTERCARE \$50 weekly

Before Care-7:30 AM - 8:55 AM and After Care 4:00 PM - 5:30 PM

Through hands on activities, your child will be encouraged to wonder, create and discover everything around them at Caspe Terrace. Each week your child will be engaging in a variety of enrichment activities including sensory play, arts and crafts, cooking, literacy, math centers, science explorations, dramatic play, and music and movement. Our large motor room, state of the art playground and acres of rolling hills provide ample opportunities for active play.

Schedule a tour today!

IMPORTANT THINGS TO KNOW

- Children need to come ready to play wearing swimsuits
- First application of sunscreen applied before coming
- Bring a wide-brimmed hat, water shoes, change of clothes for after water play, sunglasses (label everything)
- Bring healthy dairy lunches (no meat) Mondays - Thursdays
- Fridays we will provide a Shabbat lunches
- Morning and afternoon snacks provided

